



3 Pages Follow

Please disregard any other network instructions you may have received. This is the latest information available to The PROMAS Landlord Software Center. These instructions are for version 12 only. Please perform all of the steps on the following pages.

If your network has been set up following these instructions and you are still having problems, please have the network administrator or other network person email support@promas.com or fax Network Tech Support at: 703-255-9172 with specific information about the problem you are having, any network problems you may have encountered and any error messages you have received.

VIRUS PROTECTION

Disable virus checking on the PROMAS working folder. Virus programs do not respect the file locking rules used by the database files and may cause unpredictable behavior or cause record updates to fail. Schedule your backups and virus scans after hours or suspend use of the PROMAS program while performing these functions.

Network Registration

Registered onto the Server

If the registration was done at the server, or if the path on the logon screen at the workstation was pointing to the server, simply follow the instructions.

Registered onto a Workstation

If the registration was done at a workstation and the path on the logon screen was pointing to the local drive rather than the server, the registration files must be copied from the workstation to the server where they can be accessed by the other workstations. The registration files can be found in the RPROMAS folder on the machine you registered on. Copy all files in the RPROMAS folder on the workstation to the RPROMAS folder on the server.

Then proceed to follow the instructions in the rest of this document.

PROMAS NETWORK SETUP for Version 12

Defaults:

- Program is installed to Program Files (x86)\RPROMAS folder.
- Database resides in the RPROMAS\Data\LL12_Database folder.
- License information resides in the RPROMAS\LL12_License folder.

Assumptions:

- The network is set up and operational.
- We do not recommend and may not be able to support running our software on Windows Operating Systems that are no longer supported by Microsoft.
- Each workstation has full read/write access to the server where the PROMAS database will reside.
- On a Window 7 later server, that is usually the C:\Users\Public\RPROMAS folder.
- PROMAS has been installed in one of the 3 following ways - see options below.

The PROMAS registration files are on the server in the RPROMAS\LL12_License folder.

Option 1. Program is installed on the server only. Use shortcut on each workstation to run the program on the server.

- A. Install PROMAS on the server into Users\Public or any location that is accessible from all workstations.
- B. From the workstation, in Computer, browse to the server drive. Find the Rpromas\Bins folder. Create a shortcut to the Landlord12.exe file. Copy that shortcut to the desktop of the workstation.
- C. If the workstations were previously set up to run the software locally, rename the the local RPromas folder on each workstation to "RPromas Old" and remove any shortcuts to the old version of the application. This folder may be removed in the future once satisfied that the application is functioning properly.

Option 2. Program is installed on each workstation and points to data on server.

- A. Install the program on each workstation, letting it install to the default location.
- B. Point the working directory to the server using the instructions - Finding the Database - that follow..

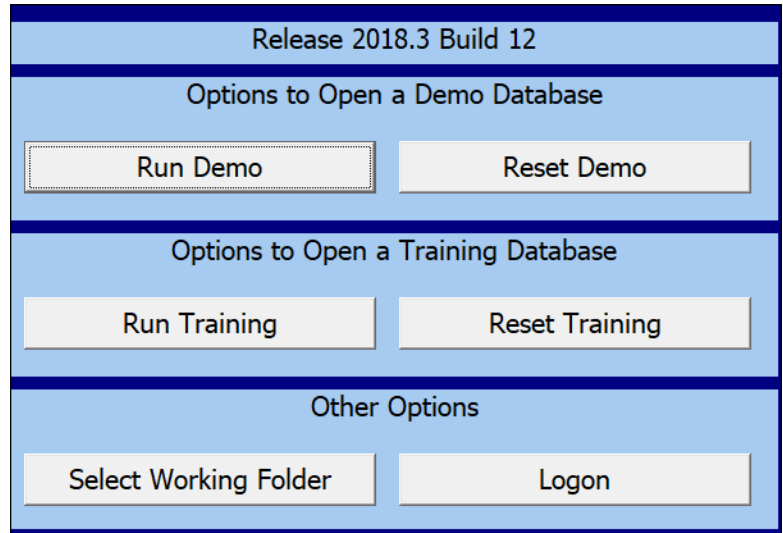
Option 3. Anytime access with Windows Server

- A. The most flexible deployment option allows in-office employees to have direct access to the program without the need for a working internet connection. Off-site employees can access the program from most Windows, Android and Apple (iOS) devices over an internet connection. It is strongly recommended that you consult with an experienced IT professional to set up any Microsoft Server product.

PROMAS NETWORK SETUP for Version 12

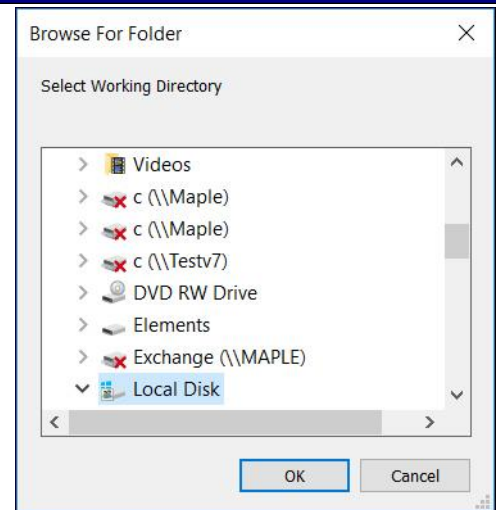
Finding the Database

At the PROMAS Logon screen you may see a screen like the one on the right. Click on the button that says Select Working Directory.



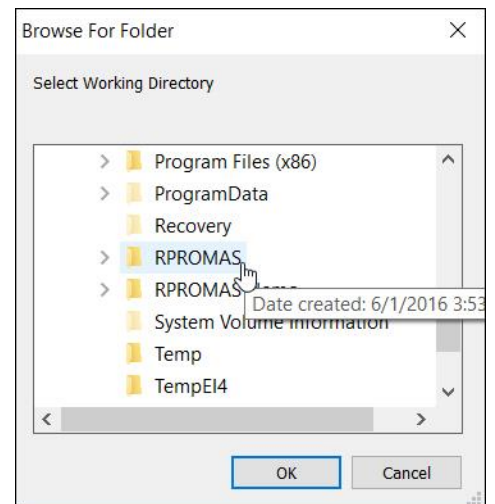
That will bring up the Browse for Folder screen.

Scroll to find the server drive and click on the arrow to the left. It may display like the picture on the right, or it may say something like \\Server\c.



Find the RPROMAS folder. On a Windows 7 or 8 server, it will be under Users\Public. On a machine with another version of Windows, it will be directly under the C drive.

Click OK.



Find your database in the Database dropdown list and log in with your user name and password.

The Professional Landlord for Windows

The Professional Landlord™

PROMAS
No Unit Limit
C:\RPromas

Database:

User Name:

Password:

[More Options](#)

Version 12
Release 2018.2 Build 8

OK Cancel